

Area 1 Softhatchee Creek (Swayback Slough) from above Collier Bridge out to the public ramp on Coosa River

For Info or To Volunteer, visit www.lakejordanhobo.org

Note: Location of hazard buoys are approximate.

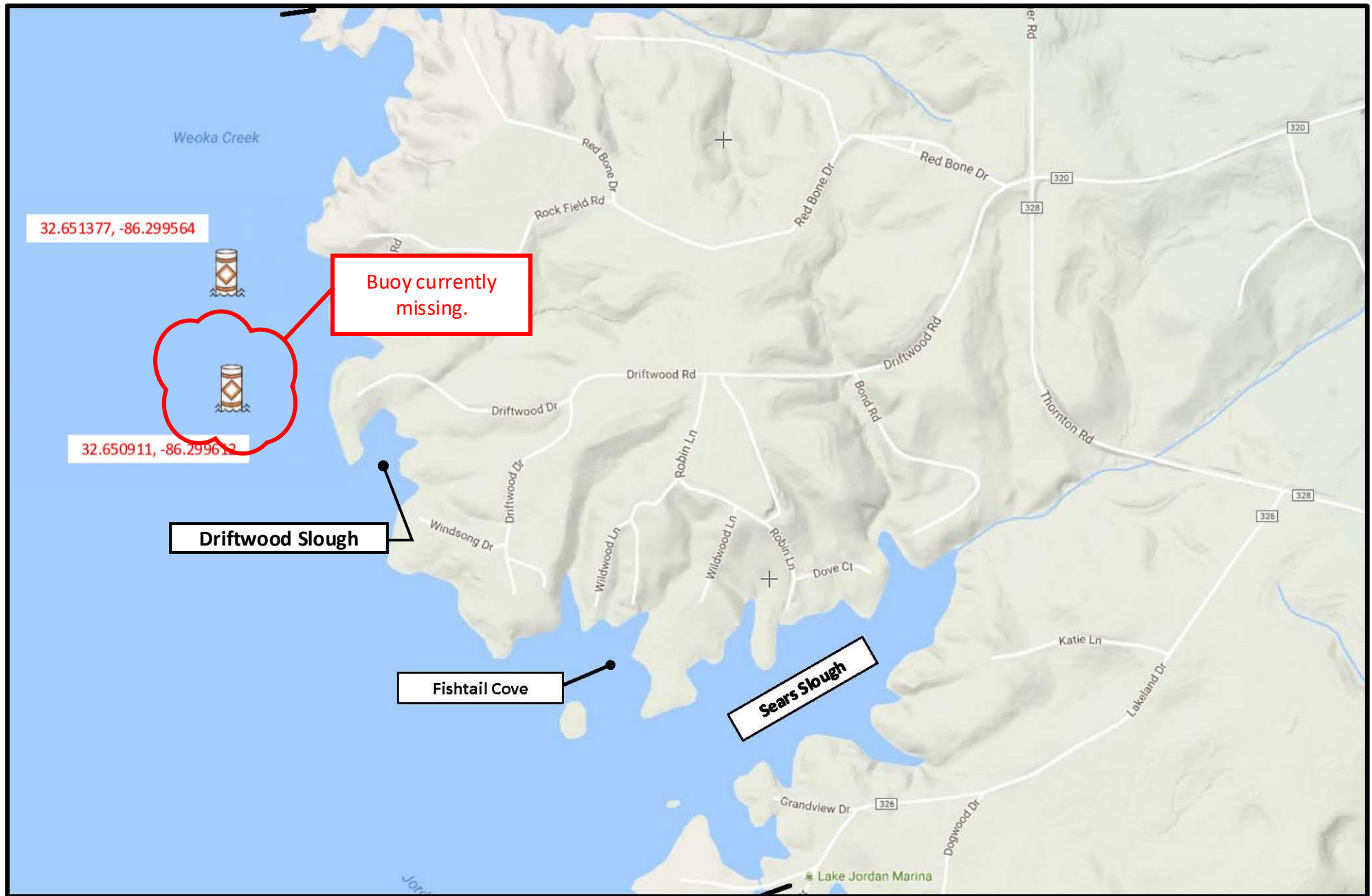
Updated: March 5, 2021



Area 2 Public Ramp to and including Lake Jordan Marina

For Info or To Volunteer, visit www.lakejordanhobo.org

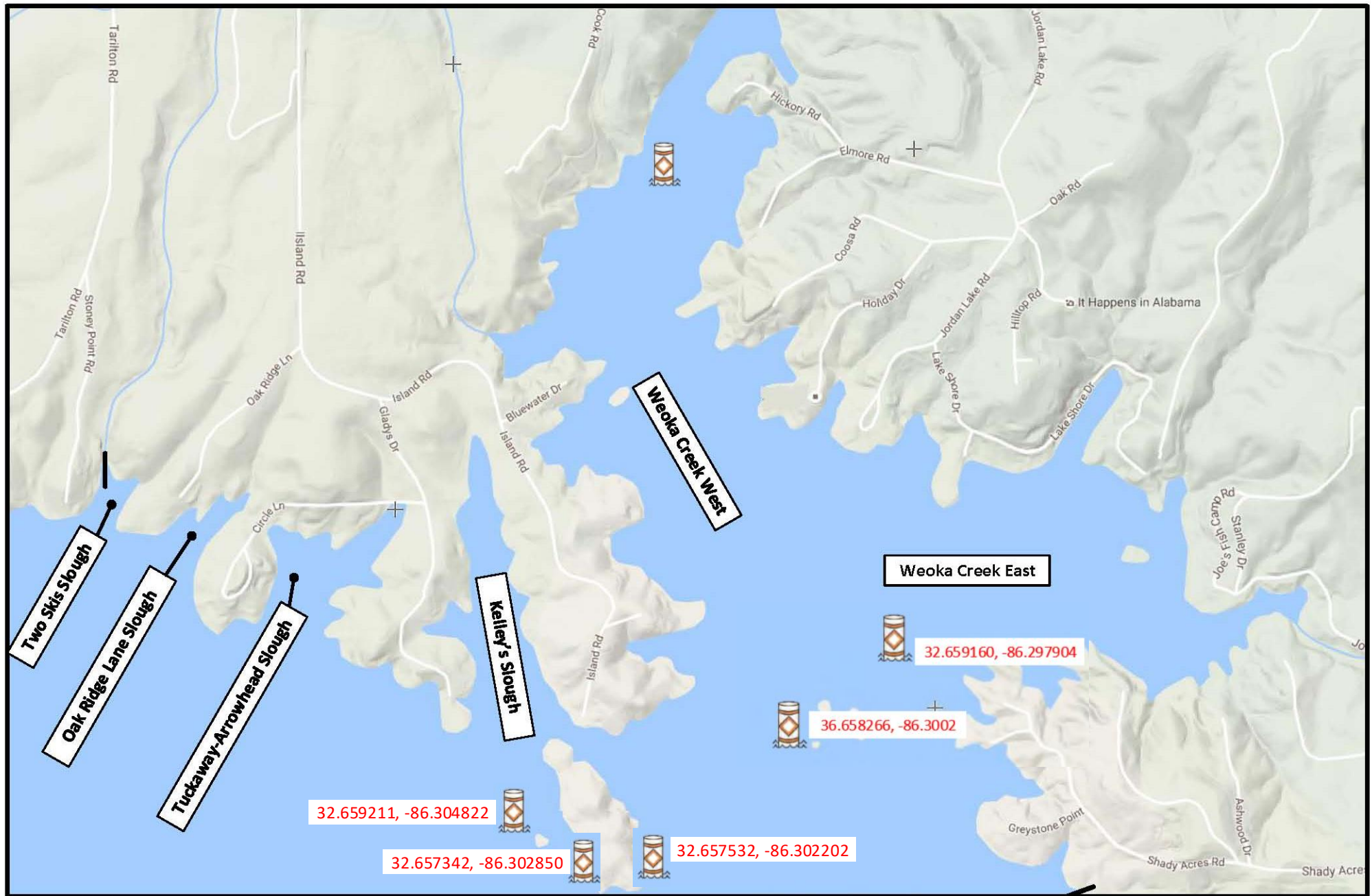
Note: Location of hazard
buoys are approximate.
Updated: March 5, 2021



Area 3 Lake Jordan Marina to Mouth of Weoka Creek

For Info or To Volunteer, visit www.lakejordanhobo.org

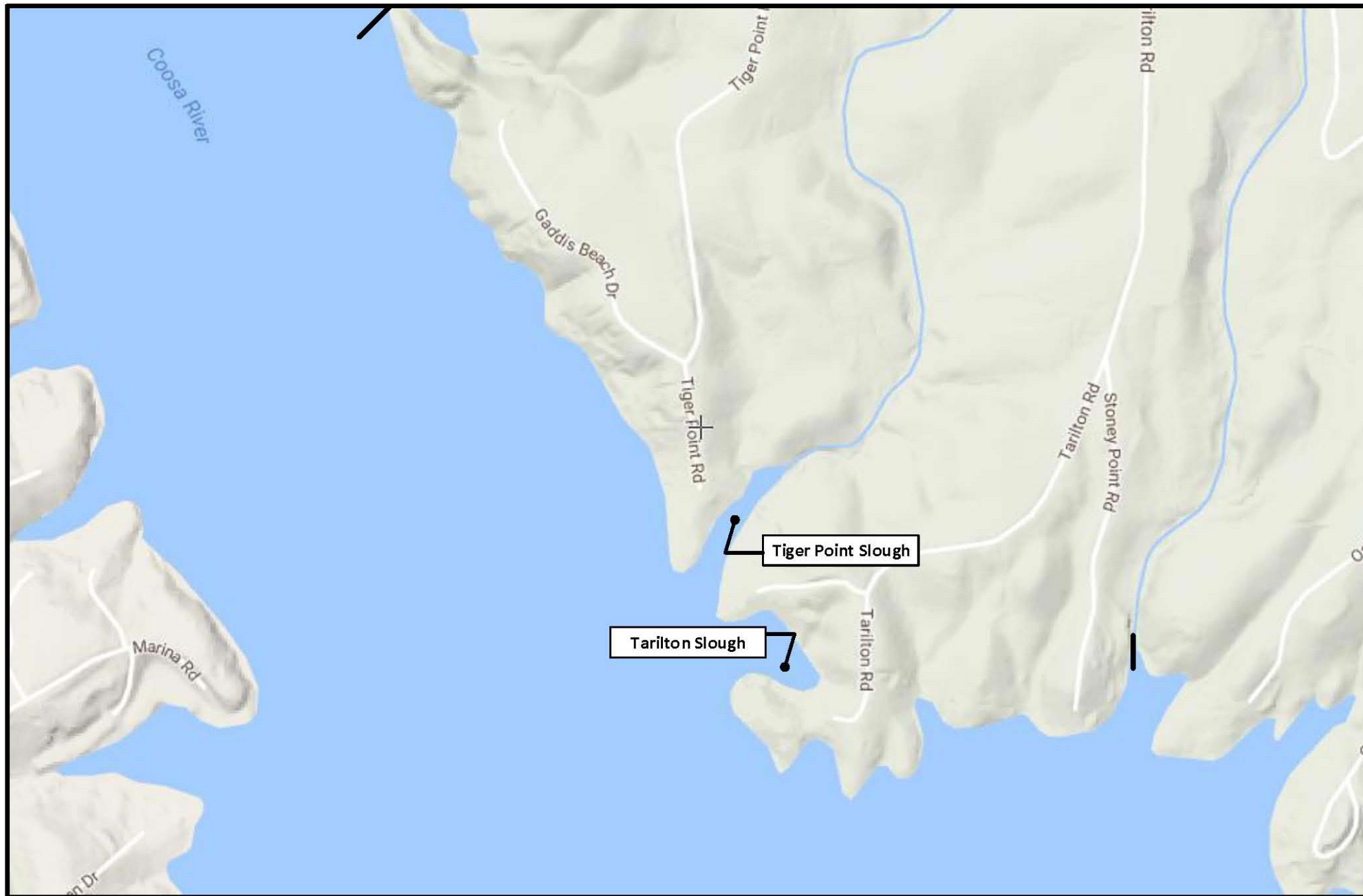
Note: Location of hazard
buoys are approximate.
Updated: March 5, 2021



Area 4 Weoka Creek including Holiday Shores , Island Road and Tributaries

For Info or To Volunteer, visit www.lakejordanhobo.org

Note: Location of hazard buoys are approximate.
Updated: March 5, 2021

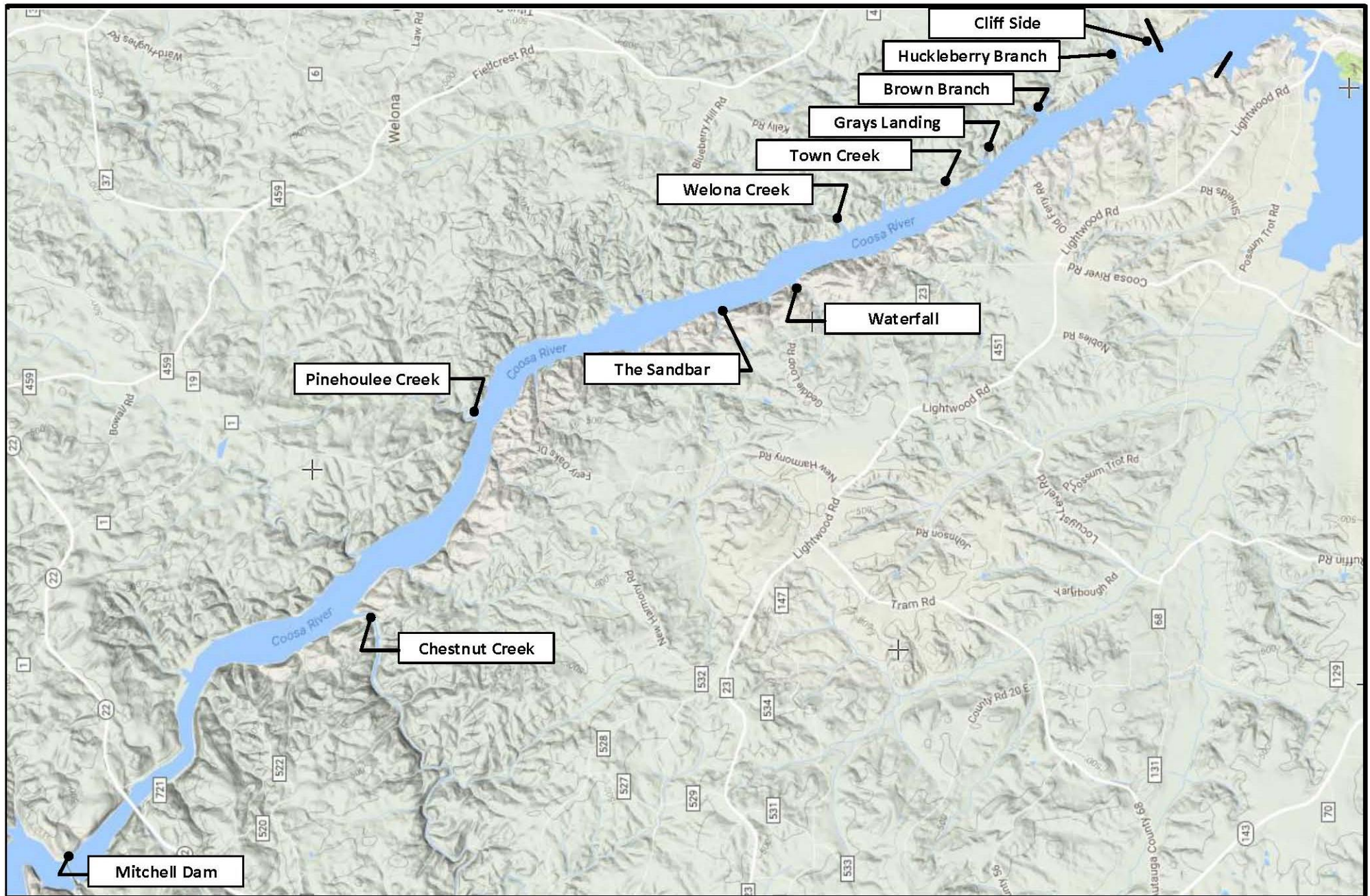


Area 5 North of Island Road, Mouth of Weoka Creek, through Gaddis Beach

For Info or To Volunteer, visit www.lakejordanhobo.org

**Note: Location of hazard
buoys are approximate.**

Updated: March 5, 2021



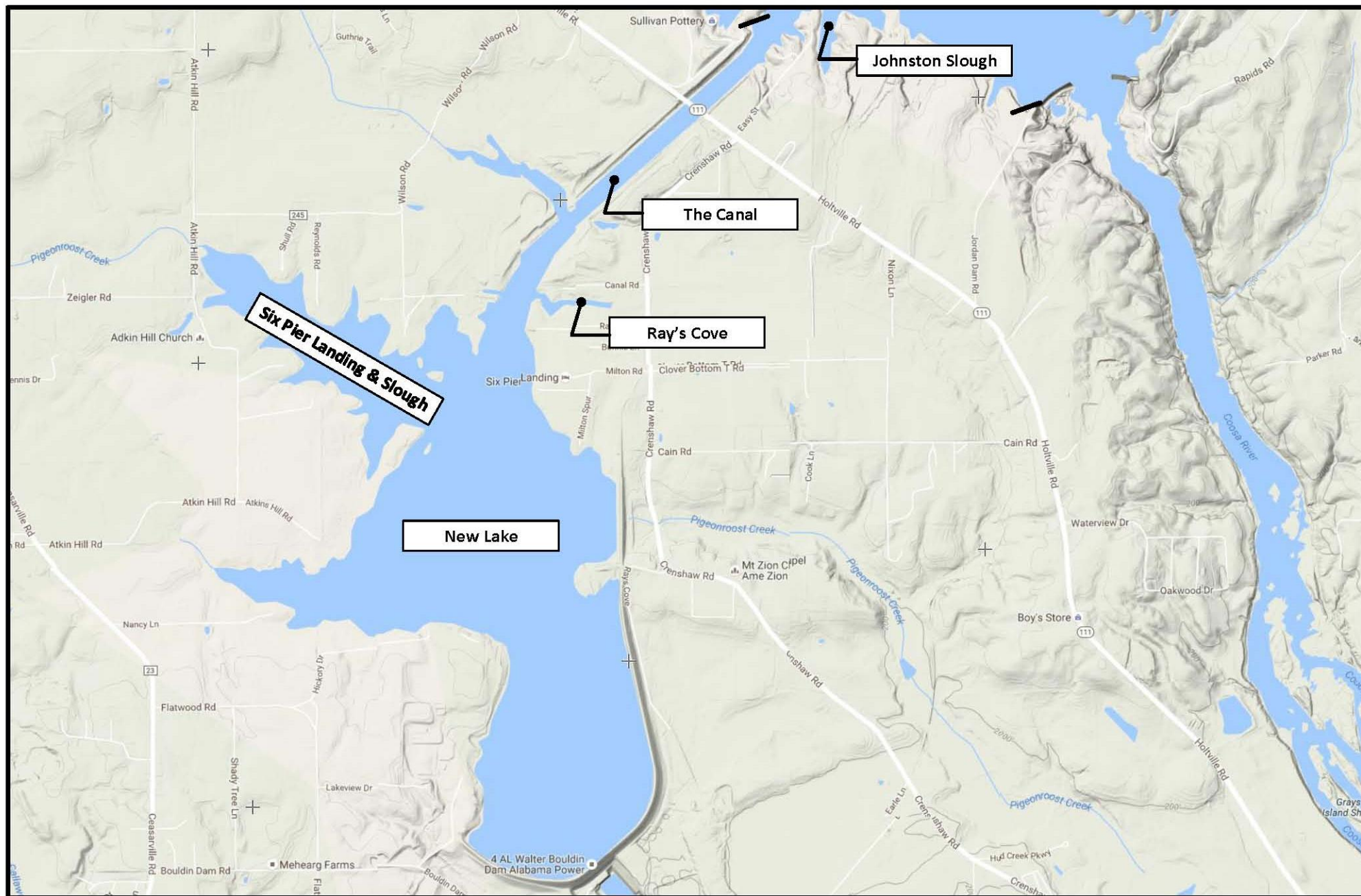
Area 6 & 12

Area 6 - Gaddis Beach to Mitchell Dam

Area 12 – From Old Fishtails Restaurant to Mitchell Dam

For Info or To Volunteer, visit www.lakejordanhobo.org

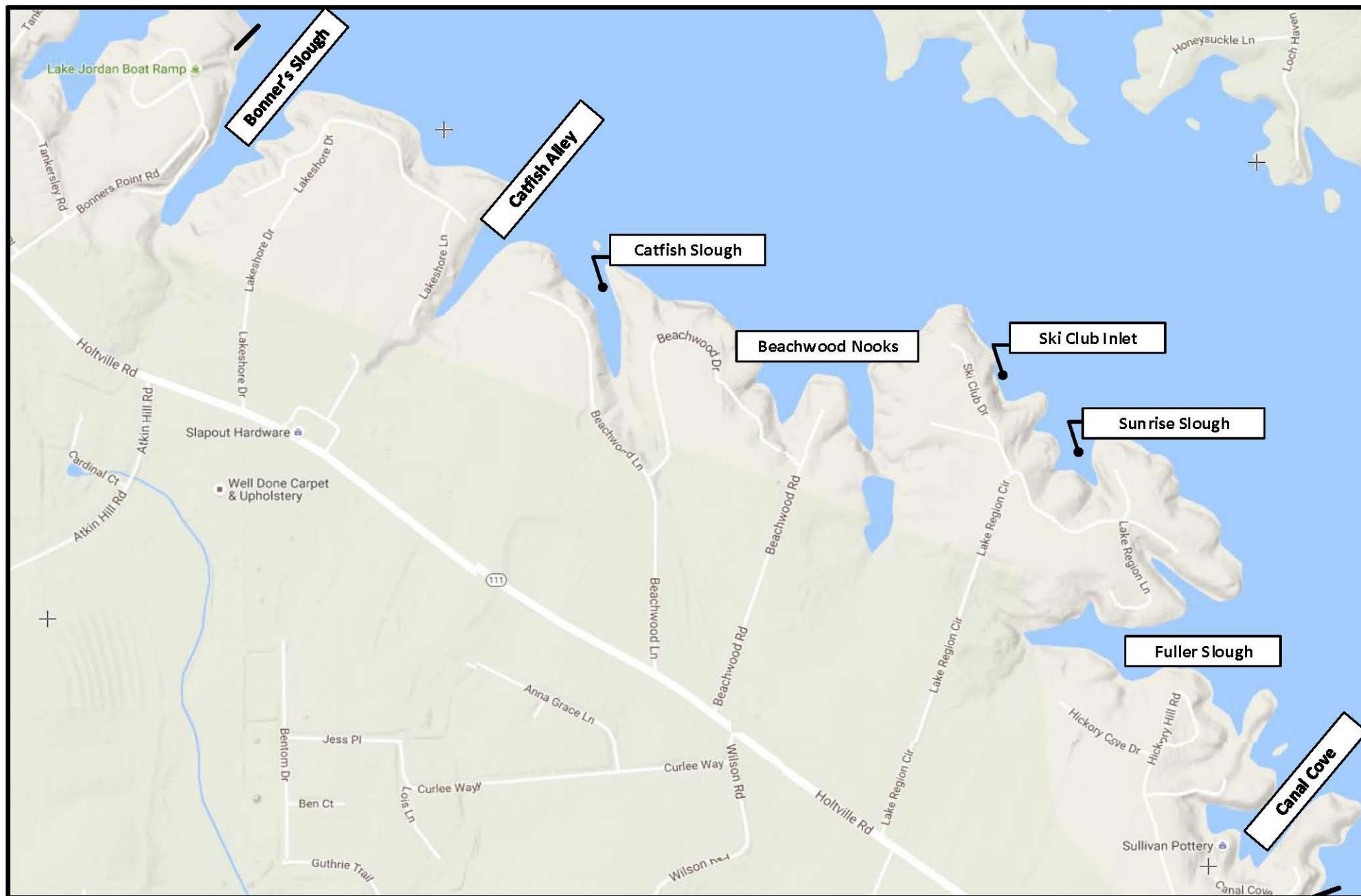
**Note: Location of hazard
buoys are approximate.
Updated: March 5, 2021**



Area 7 Jordan Dam and includes Canal, Walter Bouldin Dam and Back end of Canal

For Info or To Volunteer, visit www.lakejordanhobo.org

Note: Location of hazard buoys are approximate.
Updated: March 5, 2021



Area 8 West Side of Canal up to and Including Bonner's Point

For Info or To Volunteer, visit www.lakejordanhobo.org

Note: Location of hazard buoys are approximate.

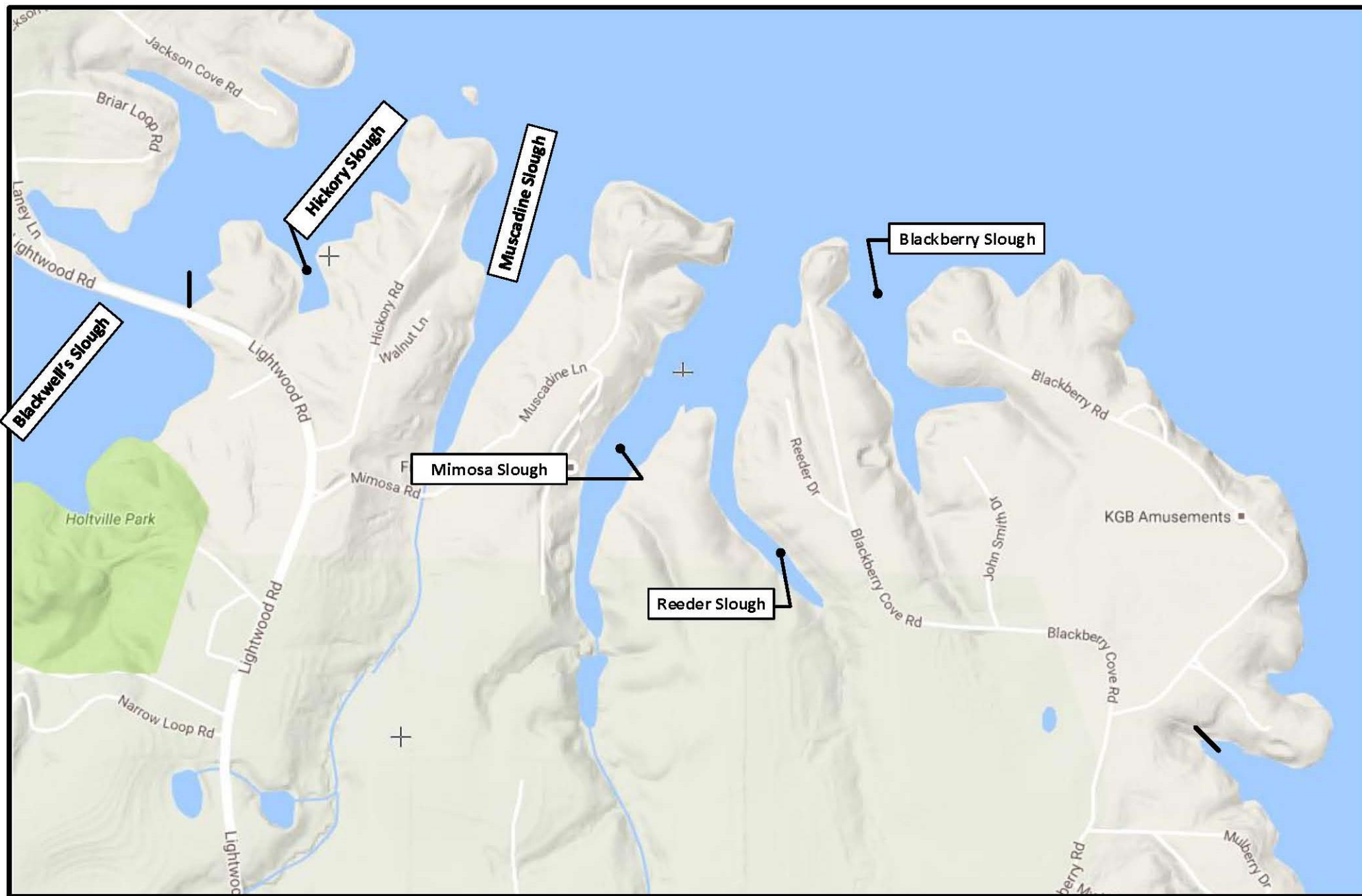
Updated: March 5, 2021



Area 9 Bonner's Point through Funderburg Terrace Subdivision (includes Donahue Slough)

For Info or To Volunteer, visit www.lakejordanhobo.org

Note: Location of hazard
buoys are approximate.
Updated: March 5, 2021



Area 10 Funderburg Terrace Subdivision to but not including Shoal Creek Area (Blackwell's)

For Info or To Volunteer, visit www.lakejordanhobo.org

Note: Location of hazard buoys are approximate.
Updated: March 5, 2021



Area 11 Total shoreline of Shoal Creek (Blackwell Slough) and up to old Fishtails Restaurant

For Info or To Volunteer, visit www.lakejordanhobo.org

Note: Location of hazard buoys are approximate.
Updated: March 5, 2021